



Valuweigh
7XXSoftware

Operation Manual and User Guide

PLU 777 TCPIP

ALFA 14

Cardinal 777 Indicator

INDEX

1. INTRODUCTION.....	4
2. MAIN SCREEN OF 777 SOFTWARE.....	4
2.1. LOGIN ON THE 777	5
2.2 VIEW LOGIN INFORMATION ON PC	5
2.3. LOGOUT ON THE 777	6
2.4. EXPLANATION OF FEATURES ON THE MAIN SCREEN	6
2.5. FACTORY DEPARTMENTS AND GROUPS.....	8
2.6. UNIQUE 777 WORKSTATION NUMBER.....	8
3. INITIAL SETUP	8
3.1 777 SUPERVISOR MENU	8
3.2. SETTINGS N1.....	9
3.1.1 <i>Explanation of Features on the SETTINGS N1 screen</i>	10
3.1.2. <i>Hot keys management</i>	10
3.3. SETTINGS N2.....	11
4. GENERAL OPERATING PROCEDURE	12
4.1. ‘GOODS IN’ WORKSTATION	12
4.1.1. <i>Enter PLU and BATCH</i>	12
4.1.2. <i>Batch code description</i>	13
4.1.3. <i>When PLU is none traceable item</i>	13
4.1.4. <i>When PLU is traceable item</i>	13
4.1.5. <i>Traceability</i>	13
4.1.6. <i>Printing on the ‘Goods In’</i>	14
4.2. ‘BAKERY’ WORKSTATION.....	15
4.2.1. <i>Load BATCH on ‘bakery’</i>	15
4.2.2. <i>Other workstations operating as ‘Bakery’</i>	16
4.3. ‘CUTTING ROOM’/’POULTRY’/’PRIMAL’ WORKSTATIONS.....	16
5. PC SERVER SOFTWARE	18
5.1. MAIN SCREEN.....	18
5.2. EXPLANATION OF FEATURES ON THE MAIN SCREEN	18
5.3. MINIMIZED PC SOFTWARE	19
5.4. ENTER AND EDIT PLU INFORMATION	19
5.5. EXPLANATION OF FEATURES ON THE PC SERVER MAIN SCREEN.....	20
5.6. WHEN TRACEABILITY IS TURNED ON FOR CURRENT PLU	20
5.8. ENTER AND EDIT INSTRUCTIONS	21
5.9. PLACES.....	22
5.10. SUPPLIERS	22

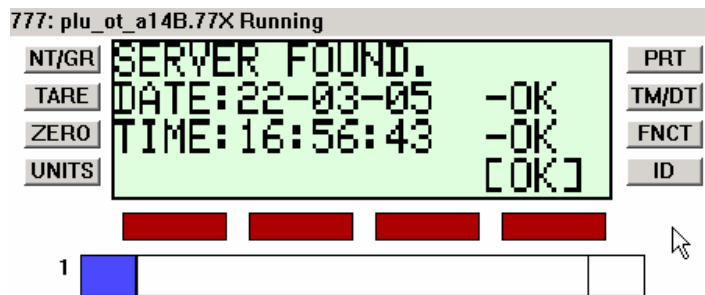
5.11. USERS	23
5.12. USER'S STATUS	23
5.13. PC SERVER SESSIONS AND MODES	24
5.14. PC SOFTWARE SETTINGS	25
5.15. EXPLANATION OF FEATURES ON THE PC SERVER SYSTEM SETTINGS	25
6. GENERAL OPERATING PROCEDURE	26
6.1 PC SERVER DATA	26
6.2. 777 WORKSTATION	26
6.3. NO SERVER SITUATION (999).....	27

1. Introduction

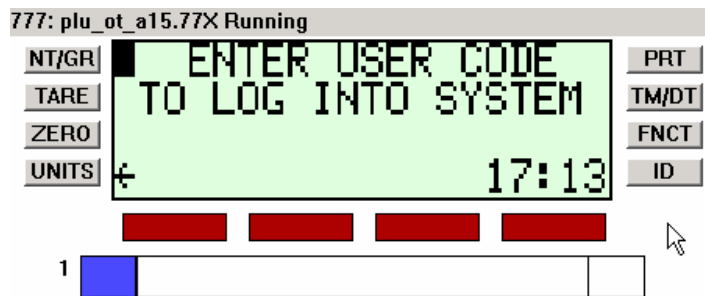
PLU 777 TCP is a software application for the Cardinal 777 indicator allowing unlimited PLU's to be stored (amount of stored records only depends on capacity of PC server storage device), and quickly recalled from PC into the 777 indicator. 4 different labels can be printed for each PLU that includes information such as ingredients, storage instructions, kill location, cut location, slaughtered, born, reared and packed location, allowing complete traceability for various meat products. The PC server software may work with a large amount of the 777 indicators via TCPIP protocol.

2. Main Screen of 777 software

On power up the Cardinal 777 will run through a start up sequence and will then display the connection screen for the several seconds,

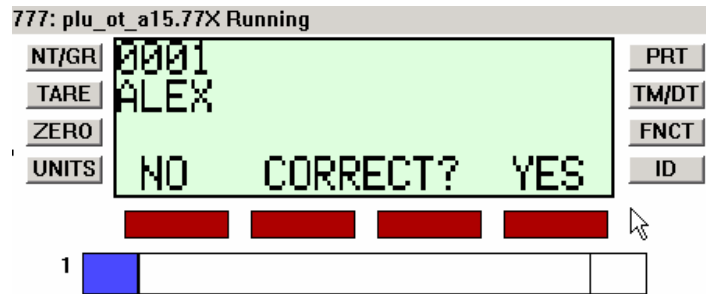


'OK' button may be pressed or in a 3-4 seconds next screen will be shown automatically:



2.1. Login on the 777

To work with a system 777 user must identify itself. For this reason server administrator needs to enter according name and password in the PC server in the user's database. After user enters the code he is identified in 777:

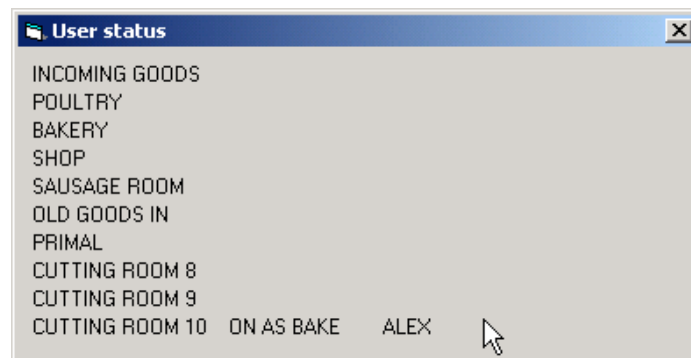


Press 'NO' if details are not correct, or press 'YES' to log in.

All next operations regarding work with incoming and outgoing products will be registered with current user name, date and time.

2.2 View login information on PC

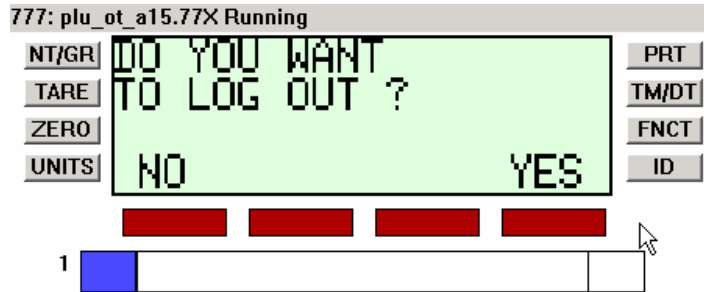
It is always possible to see current status for all logged users on all running workstations on the PC server via STATUS button (located on the main screen):



When user session looks finished he needs to logout on 777 to avoid other person to make some operations under different name. Note, that PC server must be on-line and running at the main screen to allow user to register in the system and allow other operations connected with data stored on server.

2.3. Logout on the 777

Press 'Q' on the main screen to log out. Next prompt will arrive:



After user logged out his name still appears in the STATUS screen but with 'OFF' text.

2.4. Explanation of Features on the Main Screen

This is main screen of the 777 software:



FEATURE	EXPLANATION
<p>G1 CZ</p> <p>ENTER PLU CODE!</p> <p>BATCH</p> <p>FRE/FRO/VAC</p> <p>GRP1 ... GRP9</p>	<p>Displays the Gross weight of the first scale</p> <p>Indicates that the scale is at the centre of zero. Other modes might be:</p> <p>Notifies the user that there is currently no PLU selected.</p> <p>Shows current batch code for incoming or outgoing operation</p> <p>Shows current type of product. Directly connected with use by dates specified in PLU on the server.</p> <p>Groups of hot keys (maximum 9 groups). Each hot key serves 9 products selection via 1 .. 9 buttons from 777 keypad. Read more in section 777 setup about hotkeys.</p>
NEXT	To scroll next two buttons of hot keys group.
PLU	Press to select PLU. Remember that quick

	PLU selection is possible via hot keys but they must be predefined before in the 777 setup.
BAKE	Show current mode workstation is running. That mode connected with name of factory department where workstation is connected.

Aside:

- If at any point in this program the user wishes to return to the previous screen, **FNCT** (FUNCTION button on the right hand side of the indicator's screen) should be pressed.
- **TARE** button is used for tare entry for current scale;
- **ZERO** button is used to zero current scale;
- **UNITS** button is used to select scale number if more than one scale is installed with the 777 indicator;
- **PRN** button is used to call print process. Some additional details before printing might be requested;
- **ID** button is used to get access to 777 software settings (setting1 and setting2);

777 keypad keys:

- The "A" key gives registration details of the program;
- The "Q" key gives logout prompt;
- The "R" key gives option to reprint details of needed batch number, stored on PC server before;
- The "T" key gives possibility to enter 3 lines of free text shown on the label;
- The "U" key triggers product type between FRE fresh, FRO frozen, VAC vacuum packed. Note that change of it affects use by date as for each mode some predefined amount of days are entered on PC server under each product (usually FRE=5 days, FRO=365 days, VAC=28 days).
- The "P" key is used for quick plu selection for products which starts on 'p';
- The "L" key turns logo on the label to ON or OFF;
- The "X" key shows prompt about to clear all current data (plu, batch, tray accumulators) or no;
- The "B" key triggers on the screen such batch details like: batch number, product type, born place, reared place, slaughtered place 1, slaughtered place 2, cut place 1, cut place 2, minced place, current tray weight;
- The "M" key is used for quick plu selection for products which starts on 'm';
- The keys '1', '2', '3', '4', '5', '6', '7', '8', '9' are used for quick plu selection;

THIS IS VERY IMPORTANT TO UNDERSTAND THAT ANY 777 WORKSTATION MAY BE SET TO RUN ANY PLANT DEPARTMENT. BUT DUE TO RUNNING MODE IT IS POSSIBLE TO HAVE SUCH SITUATION WHEN ONLY SPECIFIC BUTTONS FROM MENTIONED UNDER WILL BE AVAILABLE.

2.5. Factory departments and groups

There are three main groups of plant departments supported by 777 software:

1. BAKE=bakery, SHOP=shop, MANU=manufactory;
2. INGO=incoming goods (2 machines);
3. CUTT=cutting rooms (3 machines), POUL=poultry, PRIM=primal;

Some keys from the main screen will work only when specific according department is selected as default work mode. This might be an explanation why not all keys described in the current manual working in the 777 main menu. The 777 software is organized to be universal for all department of the factory. So it is organized to run in 7 different departments but is a one piece of software just with different mode settings.

2.6. Unique 777 workstation number

Additionally 777 software has a workstation identification number. It is unique digit that helps to identify workstation-completed operation on the PC server.

For example: if workstation N1 runs BAKE (bakery mode) and is turned to run as POUL (poultry) machine N1 still will be recorded in incoming or outgoing information on the PC server under the same workstation number. This great help to track any operation passed via workstation and fixed by date, time, operator name, weight and all other entered details entered by 777 operator during work session.

3. Initial Setup

The following section outlines how to work with 777 software settings, different parameters and how to organize and set different administration rights for different users.

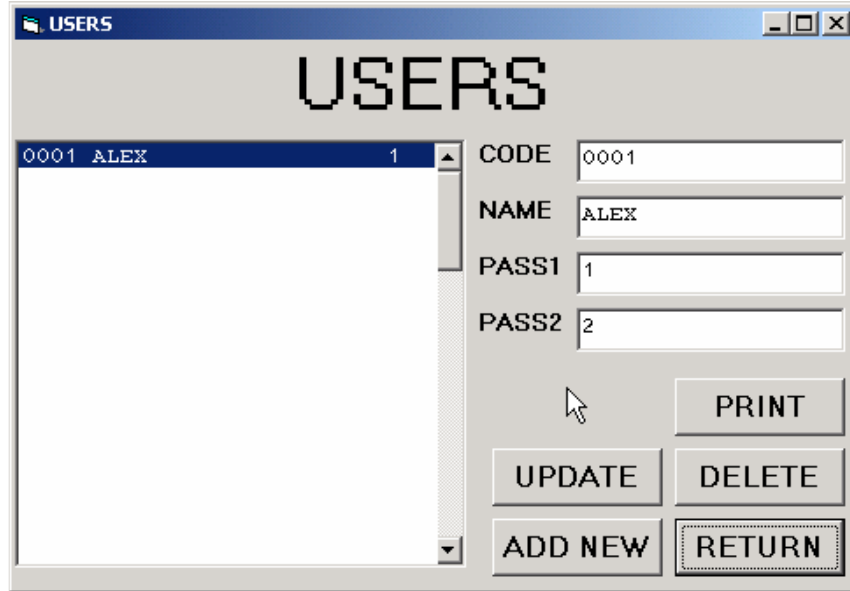
3.1 777 Supervisor Menu

To begin, press the quick key **ID** After that the **SETTINGS MENU** will be displayed:



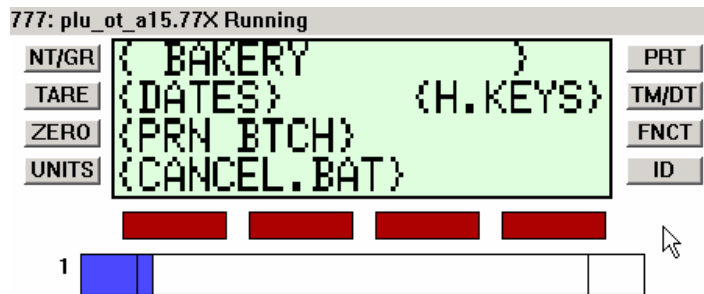
3.2. Settings N1

Settings menu is divided on two parts – level1 and level2. When administrator on PC server creates a new user he/she must know if it is needed for that user to access 777 settings and which settings level must be accessible for that user. Next screen shows some settings for user called “Alex” on the PC server:



It is possible to see that password for settings level1 is '1' and password for settings 2 '2'. Any alphanumeric information may be entered as a password but numbers (digits) are preferable.

After the correct password is entered by user next menu (settings N1) appears:



3.1.1 Explanation of Features on the SETTINGS N1 screen

FEATURE	EXPLANATION
BAKERY / SHOP / MANUFACTURING / PRIMAL / CUTTING ROOM/GOODS IN/ DATES	777 workstation mode. Use button “NT/GR” to trigger needed workstation mode. Allows changing packed date and using by date. Dates must be entered in the format DD-MM-YY.
PRN BTCH	Allows triggering print mode: BTCH – batch print when all labels are printed one by one. PEEL – when first label must be peeled of the printer to allow second label to be printed.
CANCEL BTCH	Allows canceling batch. Needs a special management password! This option cancels batch been registered on the “GOODS IN”. After that batch can’t be called from other workstations. Use with care!
H.KEYS	Allows to manage hot keys used for quick call of any PLU predefined before

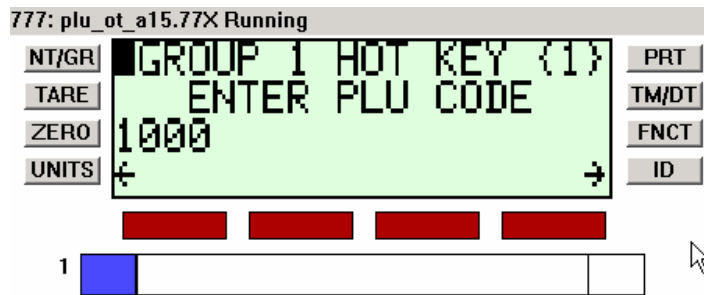
Let’s consider hot keys option more detailed

3.1.2. Hot keys management

Hot keys are used for quick product call. Any PLU code may be assigned to any hot key of any group. It is possible to have 9 groups by 9 keys in each. So, this option gives possibility to quickly call 81 product just with a button press instead to enter PLU product code. When hot keys option is selected from SETTINGS N1 menu next screen appears:



This is important to understand that hot keys may be saved on PC server to be loaded back into 777 workstation when it is needed. Press ‘NO’ if it is first time you edit hot keys or just you think that you don’t need to load hot keys from PC server.



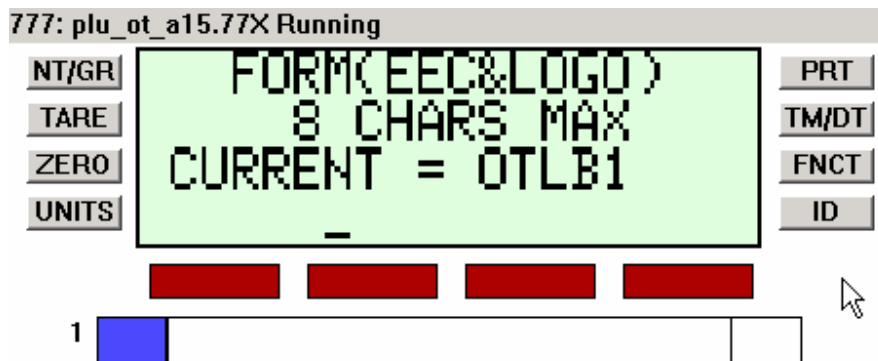
Enter PLU code that you want to assign to GROUP1 key '1'. Press enter key and prompt regarding GROUP1 key '2' will arrive next. Input all needed code in an order needed for current operator. After input for hot keys of the GROUP1 will be finished there will be a message that data is saved and the same option for GROUP2 arrives. Continue to input product codes or press FNCT to exit from hot keys edit. In any case next screen will be shown:



Press 'YES' to save current changes to PC server (recommended), so next time it'll be possible to load that changes from PC server if they will not exists in 777 by some reason (new hardware, technical problem). If hot keys changes are not saved to server it is still possible to use it normally. However, it is very important to understand that if hot keys weren't saved to PC server then they will be overwritten when loaded from PC server.

3.3. Settings N2

Settings N2 is more specific for system engineer. Edit them with care.



Form name with EEC oval and logo must be entered. Forms (labels) are stored in the printer memory and just called by the indicator before print information is sent to be printed.

Printer port number – it is possible to enter 1,2,3,4. Note that some devices might use new port number that will be entered. Normally system uses next ports:
COM1 – OIML output, COM2 – serial network converter, COM3 -

Printer baud rate – 1 for 9600, 2 for 19200.

AUTO LOGOFF TIME – this is time period to detect if no any buttons pressed on the 777 keypad. If so, then 777 workstation will automatically make a log out operation and user will need to log in to get a new work session. Enter 0 – to disable with option, or some value - to enable.

777 ID – internal workstation number. It is needed to identify record on the PC server software where stored transaction was created before.

4. General Operating Procedure

4.1. 'Goods In' workstation

'Goods In' department is responsible for incoming product registration. When product comes on the factory then it must be sign in and registered with such incoming details as: Product name, batch code, supplier name, invoice number and next product traceability (if needed) as born place, reared place, slaughtered place and cut place.

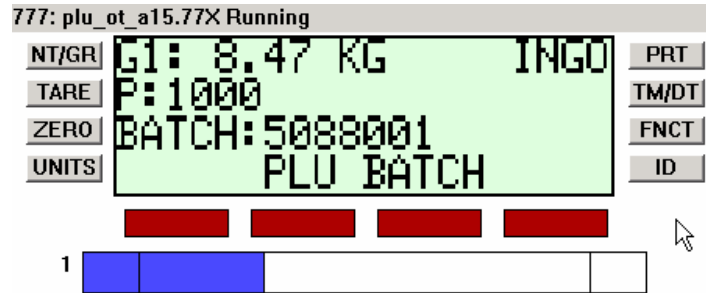
4.1.1. Enter PLU and BATCH



First of all PLU must be selected. This might be done by different ways:

- PLU button gives possibility to enter PLU via code;
- GRP buttons may help to call quickly predefined PLU from PC server;
- NEXT scrolls GRP buttons;
- Buttons '1' – '9' will jump direct to PLU call section;

After right PLU is selected then BATCH code must be selected. When BATCH code is pressed first time it calls new batch code from server. New batch code is always unique digit.



4.1.2. Batch code description

Batch code is generated always on the PC server in the next format: YDDDNNN, where Y is last digit of the current year, DDD is Julian date (amount of days since January, 1, from 001 up to 365), NNN is consecutive number of current operation for this day (from 001 up to 999).

In the current example:

5 – year 200(5), 29 MAR – 88 days since January 1, 001 – first operation of current day.

4.1.3. When PLU is none traceable item

When called item is a PLU marked as ‘none traceable item’ on PC server then next sequence of prompts follow:

- Supplier code - if not found name will be requested;
- Invoice number - Maximum 10 characters;

4.1.4. When PLU is traceable item

If called PLU is marked as traceable on the PC server then additionally to prompts described before next information will be requested:

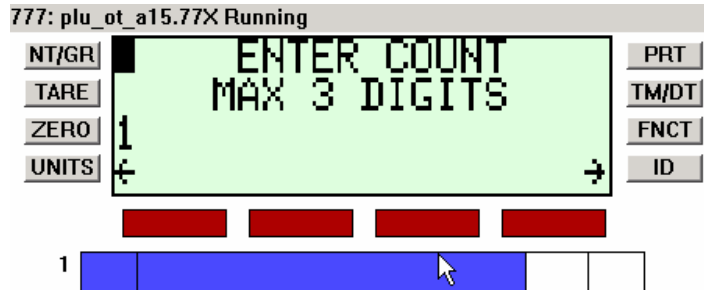
Born place, reared place, slaughtered place 1, slaughtered place 2, cut place 1 and cut place 2. Entries can’t be ignored and some information must be entered in. Places with 1 and 2 have country and plant EU code.

4.1.5. Traceability

This is important to understand that information connected with PLU and BATCH number constructs an incoming record of the product and will be open and traceable in the system. Each time when batch number will be re-called on other workstations all details entered when that batch code was created on a ‘Goods In’ station will be recalled and most important will be displayed on the label of outgoing product.

4.1.6. Printing on the 'Goods In'

Now product and batch are selected with all needed details, needed scale is selected and product is weighed on the scales. Press print to get next print details:



Enter count (max 3 digits), supposed to be amount of pieces on the scale.
Next is 'number of tickets' to be printed. Enter digit from 1 up to 99.
Next enter 'USE BY DATE' in the format DD-MM-YY.

Finally, confirm to print a label. If print mode is set to PEEL then take a label from printer to get next copy if more than one label is selected to be printed.



Note, that for quick print PRT button may be used again to print a label with default settings instead specify count digit and number of labels. This is very useful option to speed up batch labeling process. On the current example program is waiting for user confirmation after printing process is finished. Press 'NO' to continue batch or 'YES' to finish it. Also button under T=1 (one tray item, tray total 25.98 kg) will print a tray label. If it is last tray then current batch may be finished on the next prompt via 'YES' button:



After that 'Goods In' workstation will be reset and ready for next session of registering incoming products in the system.

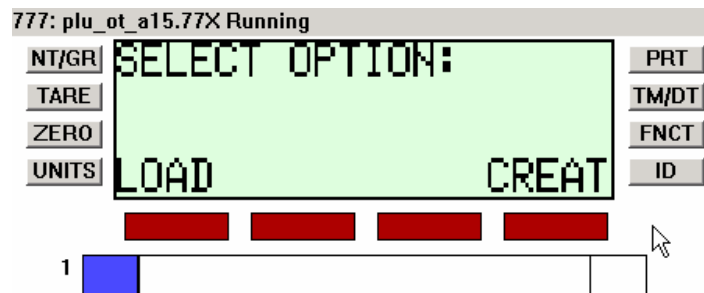
4.2. 'Bakery' workstation

This workstation works in 'Bakery' department and does outgoing operations with a product. This is main screen of the workstation:



PLU must be selected first. This is PLU of outgoing product that will be developed via this station. Note that bakery products may have such details as ingredients. They are entered on the PC server. After they are called from PC server they will be printed on the label.

When BATCH is pressed there is next choice:

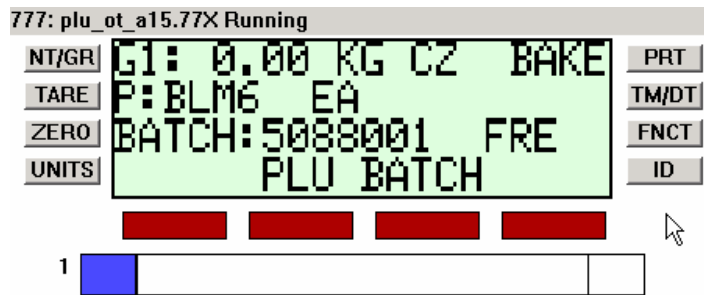


Press LOAD if you need to modify existing product that was registered before and has a label on it. Enter batch number that is on the label to call all details stored on the PC server before. In this case that batch number will be connected with outgoing product. Also if you need to make such operation as creating a new product, press CREATE.

4.2.1. Load BATCH on 'bakery'



Enter batch number of the current product which you going to proceed. In the current example batch number 5088001 will be used. After data will be loaded from PC server program returns on the main screen:



Now put product on the scale, press PRT to print, enter count, enter amount of label to print and print a label. If it is needed to finish a batch answer 'YES' on the next prompt:



Please remember that outgoing record will have batch number 5088001 as outgoing batch number as well. This operation not changes any details stored since product was registered on the 'Goods In' workstation.

4.2.2. Other workstations operating as 'Bakery'

This is important to remember that such workstations as SHOP=shop and MANU=manufactory will work exactly in the same way as 'Bakery' and by this reason are not explained in this manual.

4.3. 'Cutting room'/'Poultry'/'Primal' workstations

Next group of departments has similar operational with some little differences: CUTT=cutting room, POUL=poultry and PRIM=primal.

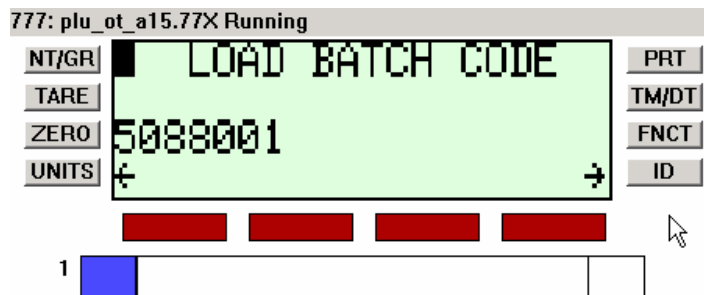
This is main menu of CUTT (cutting room) workstation:



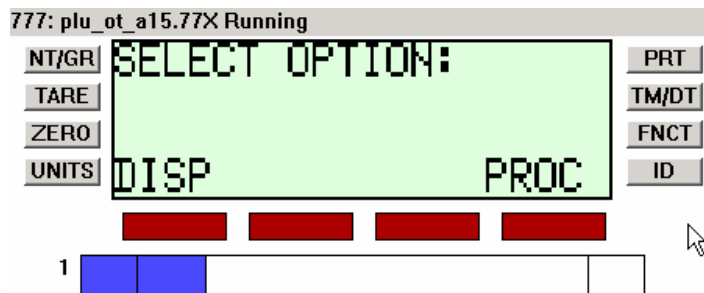
First of all PLU must be selected. This might be done by different ways:

- PLU button gives possibility to enter PLU via code;
- GRP buttons may help to call quickly predefined PLU from PC server;
- NEXT scrolls GRP buttons;
- Buttons '1' – '9' will jump direct to PLU call section;

After correct PLU is selected then BATCH code must be selected. This is batch code specified on the label of the product that is going to be proceeded. As label was printed when product passed via 'Good In' department that batch code must exists on the PC server.



After BATCH CODE is loaded from PC server then next screen is shown:



Select DISP – if dispatch operation is needed and product will go out of factory. PC server will be updated with all outgoing details for this transaction;

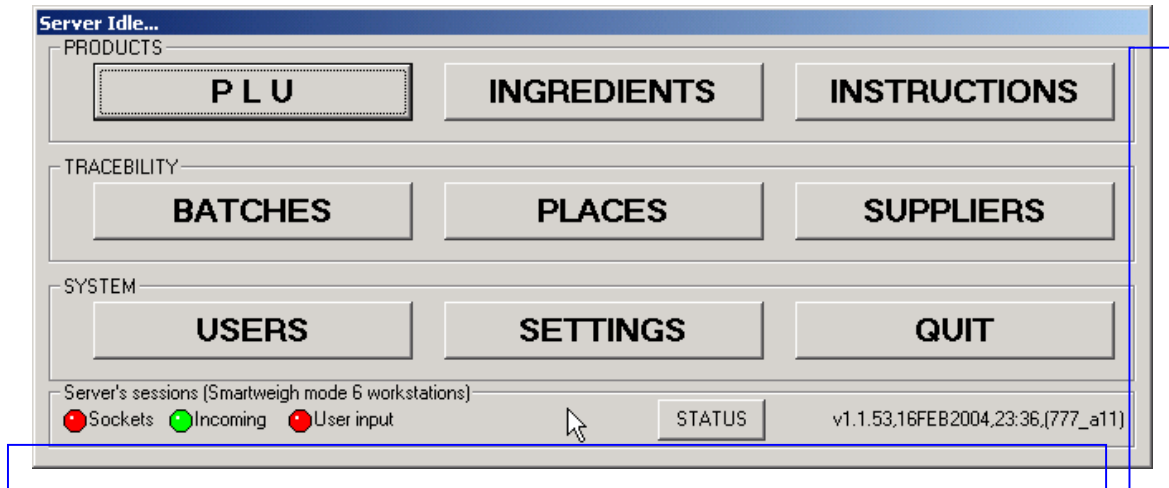
Select PROC – if product is needed to be proceeded. In this case print option will give always one label. Also tray counter will be located on the main screen of the program and workstation will not send any transaction data to PC server as this will be intermediary (internal) operation. However, as label will have original incoming batch code on it all traceability details will be still available.

When all products proceeded in the PROC mode press 'X' to clear all current data loaded in workstation (PLU and BATCH) to continue with next product.

5. PC Server software

5.1. Main screen

This is main screen of the PC server software.



5.2. Explanation of Features on the main screen

FEATURE	EXPLANATION
PLU	Use this to add/edit/delete PLU information that will be loaded by 777 workstation and printed on the label.
INGREDIENTS	Use this option to add/edit/delete ingredients for products proceeded in 'Bakery' departments.
INSTRUCTIONS	Use this option to add/edit/delete instructions for different products.
BATCHES	Work with all transactions like incoming and outgoing.
PLACES	Places needed for traceability
SUPPLIERS	Use this to add/edit/delete suppliers list called in future via code
USERS	Administration modes for 777 users. Add/edit/delete name and passwords to access different levels of 777 security settings.
SETTINGS	Settings of PC server software.
QUIT	Quit for PC server
Places marked on the picture with blue squares	Click any place within marked region to minimize program.

5.3. Minimized PC software



When PC software is minimized it is located at the left bottom corner of the Windows Desktop. If you want to maximize simply click on the window “Server Idle...”. Note that for additional security reasons minimized PC software not shown in the task bar.

5.4. Enter and Edit PLU Information

The PLU information, Ingredients, Storage instructions, User Details and Places, are all entered and edited using mostly the same procedure.

This is PLU add/edit/delete screen:

The screenshot shows a software window titled "ADD, EDIT, DELETE PLU INFORMATION". The main area displays a list of PLU codes and descriptions, with "1000 GOAT" selected. To the right of the list are input fields for "INGR", "USE BY FRE" (5), "PRO" (365), and "VAC" (14). Below the list is a search field labeled "FIND/CODE" and a "PLU CODE" field containing "1000". The selected PLU "GOAT" is shown in a field below. On the left, a vertical "I N S" label is next to a list of instructions: "1 KEEP REFRIGERATED AT 0-50C", "IF FROZEN STORE AT -180C OR BELOW", and "DO NOT REFREEZE IF THAWED". On the right, there are fields for "INV UNIT(JO,EA,WT)" (JO), "GRP(001-081)" (001), "EA WEIGHT(KG)", "EEC LOGO(Y,N)" (Y), "COUNT UNIT", "TRACE(Y,N)" (N), and "TRACE ITEMS(BRSCM)". At the bottom are "UPDATE", "DELETE", and "RETURN" buttons.

5.5. Explanation of Features on the PC server main screen

FEATURE	EXPLANATION
INGR	Call to change current ingredients details for current PLU
FRE/FRO/VAC	Fresh, frozen and vacuum. Amount of days used to calculate 'use by' date.
FIND/CODE	Enter PLU code to find and edit or view.
INS	Call to change instructions details for current PLU
JO/EA/WT	Invoice unit
GRP	Some internal information
EA WEIGHT	If invoice units are EA, weight must be specified
EEC LOGO (Y/N)	Turns graphic logo on the label ON and OFF for current PLU.
COUNT UNIT	Due to invoice units this must be specified.
TRACE (Y/N)	Turns prompts for traceability details ON or OFF.
UPDATE	Always use that when current data was changed or edited
DELETE	Deletes current PLU. Use with care. If wrongly deleted don't update, exit via RETURN button and answer NO on a save prompt.
RETURN	Exit to main screen

5.6. When traceability is turned ON for current PLU

When traceability is turned ON for current product then trace items must be specified for current PLU. According with that setting these places will be requested from 'Goods In' operator:

The screenshot shows a software interface for product registration. On the left, there are text boxes for 'SIDE OF BEEF', '1 KEEP REFRIGERATED AT 0-50C', and 'INS IF FROZEN STORE AT -180C OR BELOW DO NOT REFREEZE IF THAWED'. On the right, there are input fields for 'INV UNIT(JO,EA,WT)' (JO), 'GRP(001-081)' (001), 'EA WEIGHT(KG)', 'EEC LOGO(Y,N)' (Y), 'COUNT UNIT' (EACH), and 'TRACE(Y,N)' (Y). Below these is a field for 'TRACE ITEMS(BRSCM)' with 'BRSC' entered. At the bottom right, there are three buttons: 'UPDATE', 'DELETE', and 'RETURN'. A mouse cursor is pointing at the 'DELETE' button.

In the current example as trace items are BRSC such items as Born, Reared, Slaughtered and Cut will be requested during beef product registration.

5.7. Enter and Edit Ingredients

ADD, EDIT, DELETE INGREDIENTS

INGREDIENTS (100 REC)

4	RUMP STEAK,	CODE	4
5	RUMP STEAK,	LINE1	RUMP STEAK, GAMMON STEAK, LAMB CHOP, LAMB LIVER,
6	RUMP STEAK,	LINE2	PORK STEAK, KIDNEY, PORK SAUSAGE
7	RUMP STEAK,	LINE3	.
8	RUMP STEAK,	LINE4	.
9	RUMP STEAK,	LINE5	.
227	MEAT, WATER,	LINE6	.
228	BEEF 86%, WA		
229	CHICKEN 76%,		
230	LAMB 95%, WA		
231	PORK 74%, RUS		
233	PORK 68%, RUS		
234	DUCK 42%, DR		
235	PORK 72%, RUS		
236	VENISON 30%,		
237	PORK 68%, RUS		
238	WILD BOAR 54%		
239	PORK 78%, RUS		
240	PORK 50%, TOI		

UPDATE ADD NEW DELETE RETURN

Click on the item from the list in the left window if you want to edit item. Press 'ADD NEW' if you want to create new item. Note that code of the item must be unique and will be used in the PLU information. It'll be simply called from PLU database via code. Use DELETE when you need to remove item from list.

VERY IMPORTANT TO UNDERSTAND THAT DELETING OF INGREDIENT or INSTRUCTION WHICH EXISTS IN THE PLU RECORD IS POSSIBLE BUT NOT RECOMMENDED AS IT'LL DESTROY PLU LOGICAL INFORMATION AND PLU WILL BE LINKED TO NOT EXISTING ITEM

5.8. Enter and Edit Instructions

ADD, EDIT, DELETE STORAGE INSTRUCTIONS

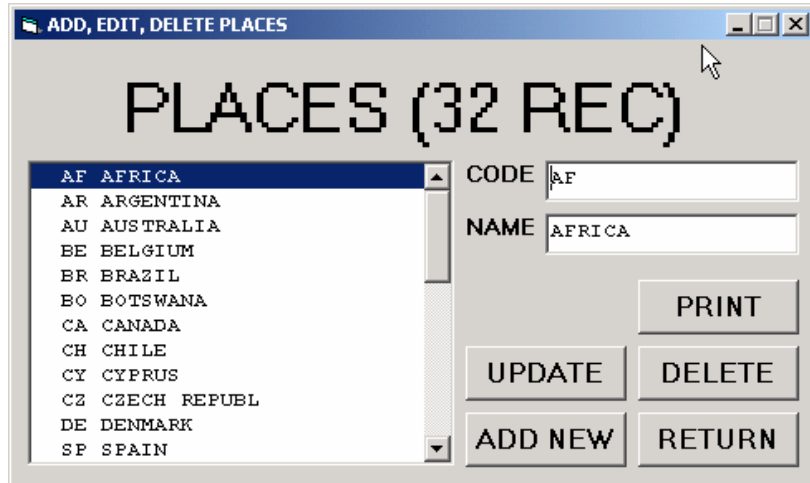
INSTRUCTIONS (5 REC)

2	KEEP REFRIGERATED AT 0-40C	CODE		CLEAR
1	KEEP REFRIGERATED AT 0-50C	LINE1		
4	STORE AT 0-40C FRESH, <-1800	LINE2		
3	KEEP REFRIGERATED AT -1 TO	LINE3		
5	STORE BELOW 80C UNDER REFRIG	LINE4		

UPDATE ADD NEW DELETE RETURN

Work with Instructions is exactly the same as work with Ingredients. Please look 5.7. of current manual for more information.

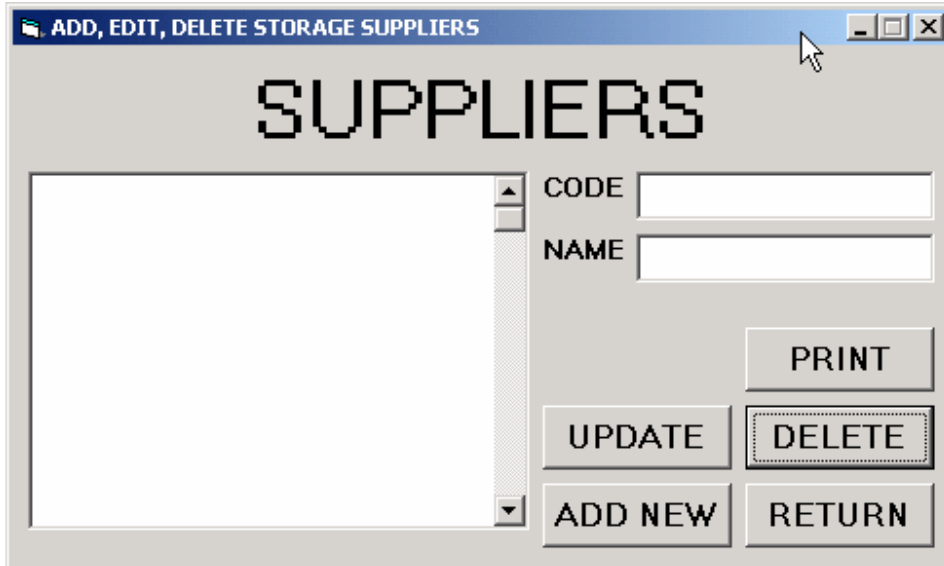
5.9. Places



Places are used for such traceability details as Born, Reared, Slaughtered, Cut and Minced. Note that in addition to previous data edit places may be printed on a Windows based printer via PRINT option.

5.10. Suppliers

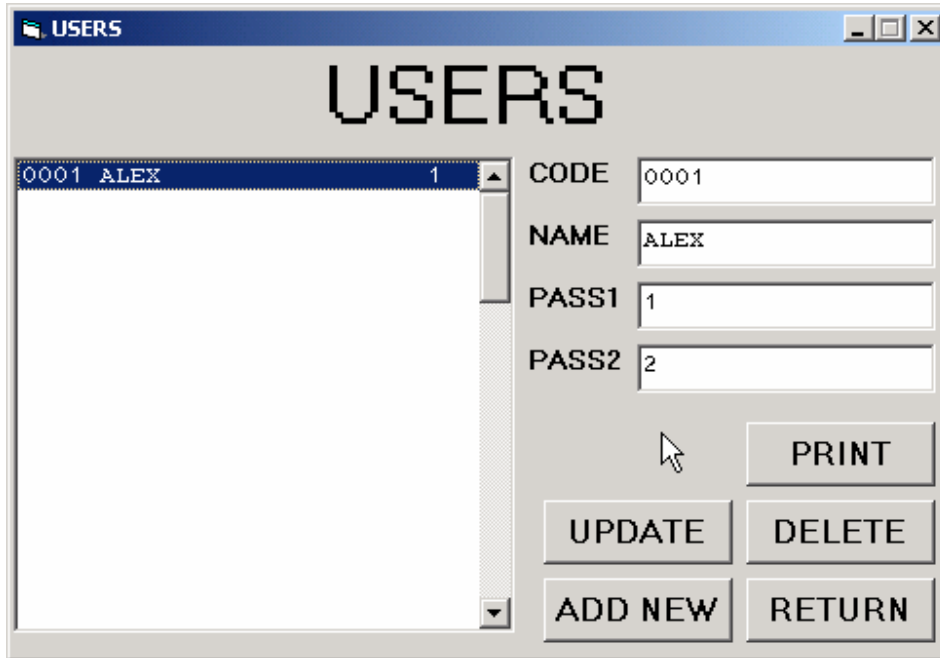
Supplier's information will be requested on a 'Goods In' workstation via code.



It is possible to print a list of suppliers via Window notepad on Windows based printer.

5.11. Users

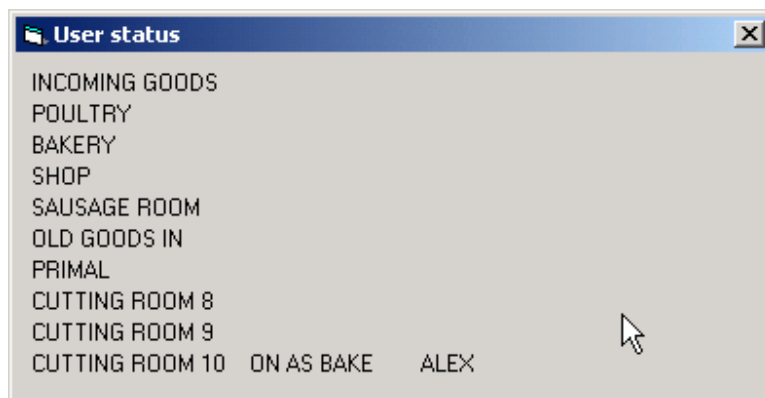
This option allows creating 777 workstation users and set them needed security level passwords to access 777 system settings.



Pass1 is to access level N1 on 777 and Pass2 is to access level N2 on the 777.

When user logs in he/she need to enter only name. However, when he/she tries to access security settings on 777 additional passwords according with passwords set for that user on PC server will be requested.

5.12. User's status



When user is logged in to 777 workstation – he/she is registered on the PC server. It is possible to see who is logged on each workstation and what mode that workstation is currently running. As 777 software is universal, the same copy running in all different departments and difference is only in the 777 program settings. Different settings allow

the same code to run as workstation of different department. This might be use in some critical situations when one workstation is off-line by some reason, then closest workstation if needed might be turned to run with functionality of faulty workstation.

On the current screen example it is possible to see that Cutting Room N10 workstation runs as 'Bakery' workstation and user is Alex.

Additional to workstation mode setting each 777 has internal ID number which helps to identify workstation physically on the PC server.

5.13. PC server sessions and modes

PC server has different running modes:



First of all, server may run in Network session or Simulation session.

Network session means when server works with real 777 workstations via TCPIP protocol. Serial/Ethernet converted installed on 777 on COM2 provides a network bridge between PC server and 777 workstation which is programmable weighing indicator. It is much recommended for plant or factory to have network installed and proofed before installing this software/hardware package.

Smartweigh session means that PC server is going to be connected with simulation program. In the current example screen shows that server works in Smartweigh mode with 8 workstations. Please note, that amount of workstations PC server software detects automatically during its startup.

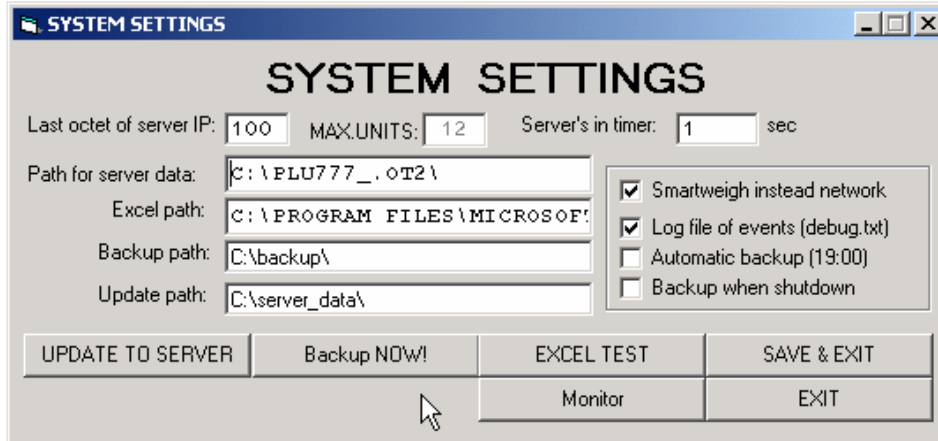
PC server has different modes such as:

- Network sockets check;
- Check for Incoming packets from 777 workstations;
- User input work;

Note that user input overrides all existing modes and puts server in stand by mode.

5.14. PC software settings

This is screen with PC software settings:



5.15. Explanation of Features on the PC server system settings

FEATURE	EXPLANATION
Last octet of server IP	Digit. For example if server IP address is 192.168.1.100, then octet is 100.
Max Units	Maximal amount of workstations for server to support. Not changeable
Server's incoming timer	Time how quick server will check incoming packets from 777 workstations
Path for server data	Path to access data files of the server
Excel path	Path to access Excel executable file
Backup path	Data path to put files during server's data backup. Possibly to have folder on re-writable CD, created as packet format.
Update path	Path for data files of the server to be updated. See according section for more details
UPDATE TO SERVER	Option is available only on computer running second server software. It simple put information file from second server to first server and loads output data of all departments into second server.
BACKUP NOW!	Creates a backup of most important information of the server instantly. It'll be created in the folder specified.
EXCEL TEST	Checks excel path and run MS Excel.
SAVE & EXIT	Saves settings and exits to main screen
Monitor	Monitors for workstation's network status

6. General Operating Procedure

This section provides a step-by-step guide to completing a start of work process using system.

6.1 PC server data

Run PC server and enter all information that must be used on 777 workstation. Usually it is next information:

Products:

- PLU - product look up, use internal codes, enter all details what you need;
- Ingredients - use for manufacture departments. Connection with PLU is provided via code;
- Instructions - enter for storage purposes. Connection with PLU is provided via code;

Traceability:

- Batches - this is output information only for analysis;
- Places - use places to have traceability details to be connected with needed batch number;
- Suppliers - Enter supplier information to be called on the 'Goods In' station;

System:

- Users - Create codes to give for users access to system and possibly some system settings on 777 workstations;

6.2. 777 workstation

Log in 777 workstation by use according name. Name must be set on the PC server first. Use ID button, select settings level and enter according password. Set workstation mode according with workstation place of the current department.

Set hot keys to be connected with most often used product codes.
Set printer mode (peel or batch).

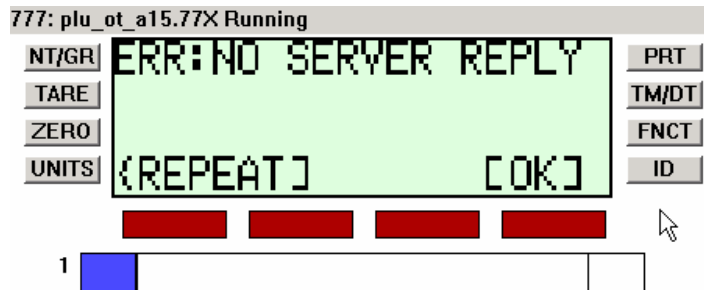
Now usual work starts:

- Select PLU code via hot keys or PLU button;
- Select batch number (on a 'Goods In' create unique batch number from PC server);
- Enter more details if needed (specific from workstation mode, was described before);
- Put weight, press PRT for print;
- Enter details or press PRT again for quick print;
- Continue to use the same operations until tray not full;
- Print tray label;
- Finish batch and after start new one.

6.3. No server situation (999)

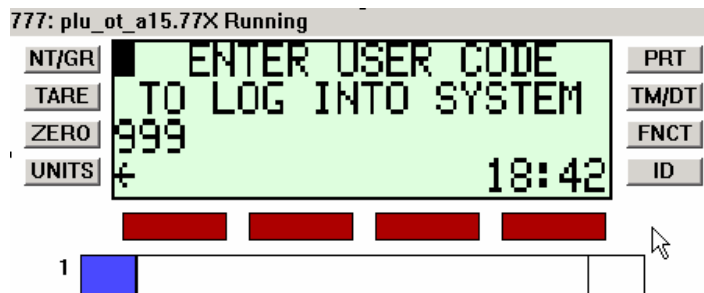
In case PC servers malfunction there is a chance still to use 777 workstation with very basic operations for product labeling.

First of all it is possible to see next message on the 777 workstation:

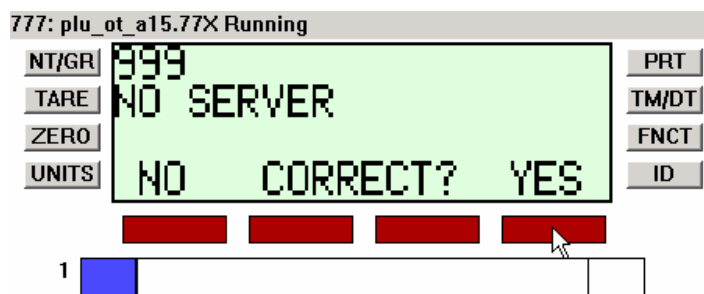


Press OK if you sure that PC server is not on-line. Otherwise press REPEAT to continue previous request.

Enter USER CODE as 999 to continue work without PC Server.



Next screen confirm with YES.



Now 777 workstation is going to work without PC server and is ready for very basic labeling operations. This mode allows for production not to stop even there are some problems with network or PC server machine.

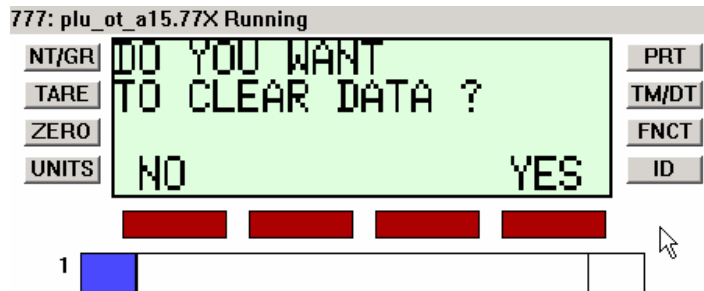


Press ENTER. You'll be prompted for such details as:

- Product name;
- Best before date;
- BATCH NUMBER LOAD or CREATE;
- EEC LOGO; (Y/N);
- Count of pieces;
- Amount of label to print;

Print a label. When needed print a tray label.

When batch is finished clear the data:



After data is cleared next product or operation may be proceed.



**Unit 17/18 Mercers Road, Chapel Pond Hill, Bury St. Edmunds,
Suffolk, IP32 7HX**

Tel: 01284 701222 Fax: 01284 703559